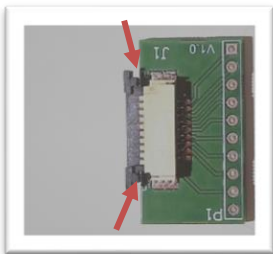
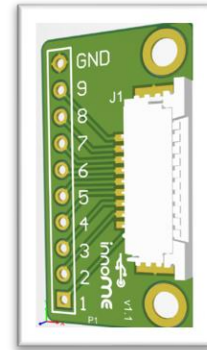
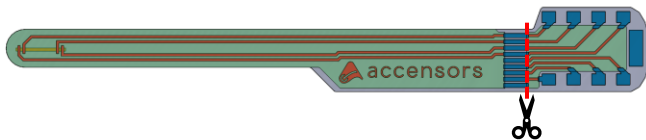


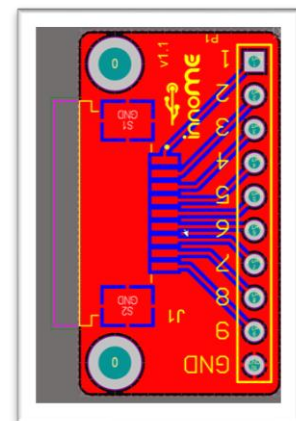
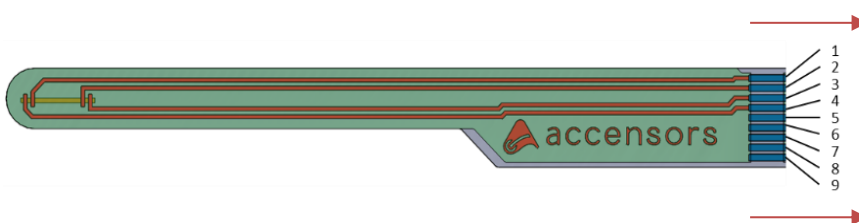
General Description

The ACO ZiF-Board is a simple evaluation board that allows quick evaluation of the performance of ACO sensor products. To use the evaluation board with our sensors, cut the dashed line as seen below.



To open the ZiF-Connector you must pull the black bracket out.

Connect your sensor as seen below. Please note the following. The accensors logo should not be mirror-inverted. Sensor and evaluation board are at a right angle (90°). ZiF-Connector is closed again.



Pin assignment

PIN Nr.	Sensortype					
	ACO S-101	ACO S-201-204	ACO S-231	ACO S-301	ACO S-401	ACO S-501
1	U2	U2	-	-	U2	-
2	U1	U1	-	-	U1	-
3	I1	I1	-	-	I1	-
4	I2	I2	-	-	I2	-
5	-	-	-	Ref	-	-
6	-	-	-	Sens	-	-
7	-	-	C1	-	-	C1
8	-	-	GND	-	-	GND
9	-	-	-	-	-	-

Important notice

This evaluation board is intended for use for engineering development, demonstration, or evaluation purposes only and is not considered by accensors to be a finished end-product fit for general consumer use. This is a product intended for use in environments other than domestic environments that are connected to a low-voltage power-supply network that supplies buildings used for domestic purposes. In a domestic environment this product may cause radio interference in which case the user may be required to take adequate measures (EMV-Richtlinie 2014/30/EU Artikel 2 - 2 - e).

Persons handling the product(s) must have electronics training and observe good engineering practice standards. As such, the goods being provided are not intended to be complete in terms of required design-, marketing-, and/or manufacturing-related protective considerations, including product safety and environmental measures typically found in end products that incorporate such semiconductor components or circuit boards.